

Name: \_\_\_\_\_

Quiz #6

1) All muscles are composed of three parts: an \_\_\_\_\_, which is the location of the less movable end of the muscle; an \_\_\_\_\_, which is the location of the more movable end of the muscle; and a middle region between these two parts called the \_\_\_\_\_.

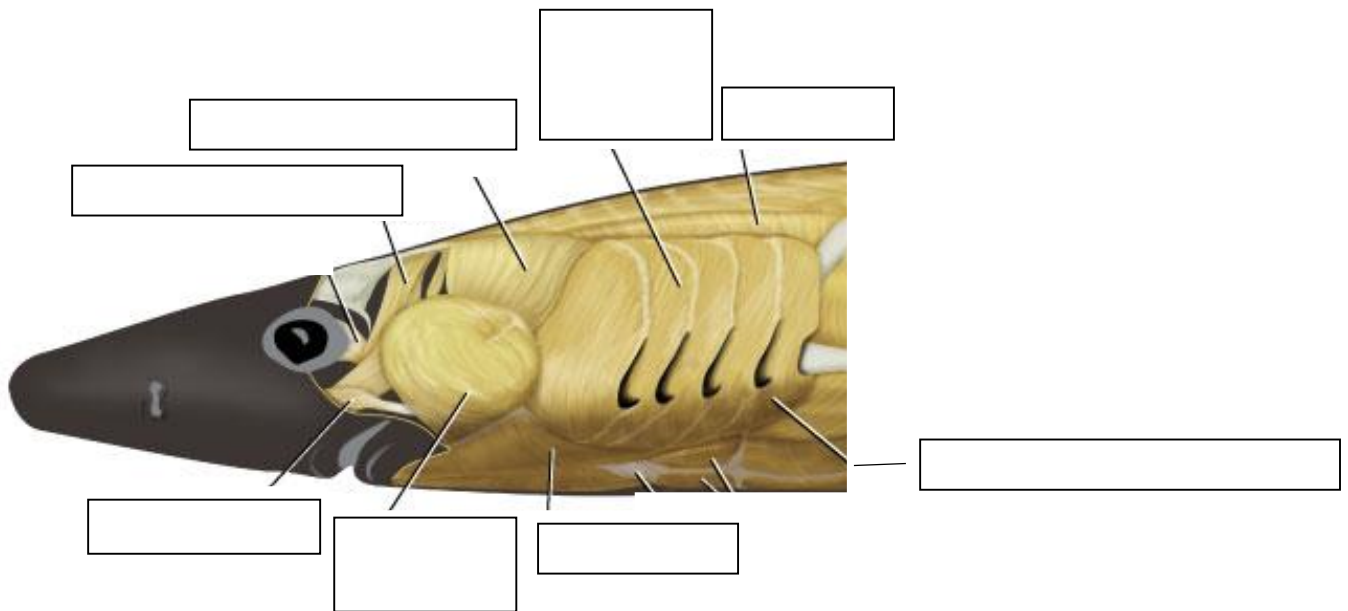
2) Muscles are often named for their primary action. The book names four common ones. Name two of these.

3) Your book lists four hypobranchial muscles on the shark, which are found in the throat region of the shark near the thyroid gland. Name two of them.

4) The adductor \_\_\_\_\_ is a large globular muscle located at the angle of jaw and is the primary muscles used for snapping the shark's jaw shut.

5) The \_\_\_\_\_ and \_\_\_\_\_ are located in line with the pectoral and pelvic girdles and control fin movement in sharks.

6) Name as many of these muscles as you can for 0.25 bonus each. You're only naming muscles by filling in the blank boxes. The box goes with the line extending past the edge of the shark's body. If you have questions, ask.



## WORD BANK

Abductor  
Adductor  
Adductor mandibulae  
Belly  
Coracoarcual  
Coracobranchial  
Coracohyoid  
Coracomandibularis  
Cucularis  
Dorsal fin muscle  
Dorsale superficial constrictor  
Extensor  
External gill slits  
Flexor  
Horizontal septum  
Insertion  
Interhyoidus  
Intermandibularis  
Levator hyomandibulae  
Levator palatoquadrate  
Linea alba  
Mandibulae  
Origin  
Pectoral fin muscles  
Pelvic fin muscles  
Preorbitalis  
Raphes  
Scapular process  
Ventral superficial constrictor